

- [Home](#)
- [About](#)
- [Abbatron](#)
- [Products](#)
- [Locate](#)
- [Distributor](#)
- [or](#)
- [Representative](#)
- [Contact Us](#)
- [Request Information](#)
- [Site Map](#)

Dual Binding Post

- Fluted or hex insulated post heads are molded Lexan Polycarbonate. Captivated to prevent loss
 - Body is brass with tin plating
 - Insulated washers are molded polycarbonate and completely insulate post from panel. Keyed to panel and body to prevent rotation
 - Body mounts into dual holes with 3/4" centers.
 - Connects with .080" phone tip plug, spade lug(1/4") standard banana plug, alligator clip, wire(to #14) and shorting links
 - To connect circuit, wrap wire around solder turret to attach to solder lug between nuts(Lug not supplied)
 - All posts shown here are available with alternating head colors in red and black as indicated in table
- [More information on Binding Posts.](#)

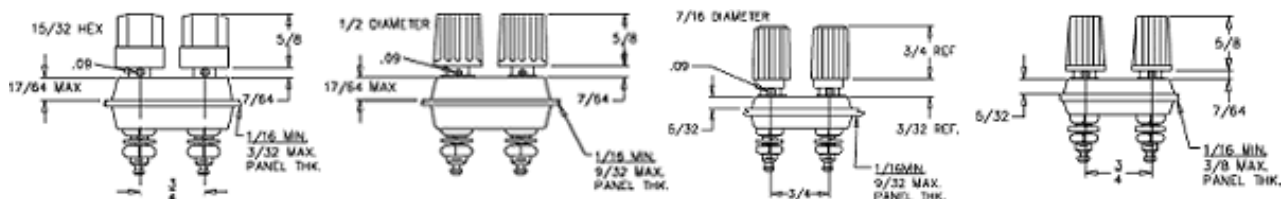


A

B

C

D



Inventory Search

Cross Reference

UPS Tracking

632 Arch Street, POB
726 Meadville, PA
16335 USA 814-724-6440

[Contact Webmaster](#)

© June 6, 2005

PART NO.	FIG.	MNTG HOLE	POST THREAD	HEAD SHAPE	HEAD COLORS
269BB	A	1/2	10-32	Hex	Black - Black
269RB					Red - Black
269RR					Red - Red
1808BB			8-32		Black - Black
1808RB					Red - Black
1808RR					Red - Red
1813BB	B	1/2	10-32	Fluted	Black - Black
1813RB					Red - Black
1813RR					Red - Red
1812BB			8-32		Black - Black
1812RB					Red - Black
1812RR					Red - Red
1477BB	C	3/8	6-32	Fluted	Black - Black
1477RB					Red - Black
1477RR					Red - Red
1810BB			8-32		Black - Black
1810RB					Red - Black
1810RR					Red - Red
1814BB	D	3/8	6-32	Fluted	Black - Black
1814RB					Red - Black
1814RR					Red - Red
1809BB			8-32		Black - Black
1809RB					Red - Black
1809RR					Red - Red

[home](#) | [about abbatron](#) | [products](#) | [locate distributor or representative](#) | [contact us](#) | [request information](#) | [site map](#)